

VAHVA GRAPPLE

C

80, 100, 140

Spare Parts Book

Version 9.10.2023 (English)

The logo consists of the word "VAHVA" in a bold, black, sans-serif font with a white outline, set against a yellow rectangular background.

Table of contents

1	General.....	3
2	Spare parts drawing	4
2.1	Grapple	4
3	Spare parts lists	5
3.1	VAHVA GRAPLE C80.....	5
3.2	VAHVA GRAPLE C100.....	5
3.3	VAHVA GRAPLE C140.....	6
4	Hydraulic cylinder repair	7
4.1	Hydraulic cylinder removal and installation.....	7
4.2	Hydraulic cylinder seals replacement.....	7

1 General

This manual describes the spare parts used for VAHVA grapple.

The book provides you necessary information about the structure and operation of our product to use and maintain the device properly.

For the most demanding repair and maintenance work, we recommend contacting Koneosapalvelu or your grapple dealer. Our service staff has the experience and special tools needed for more demanding jobs.

The C models in our VAHVA collection are designed to be mounted on a rotator and the KC models are quick-mounted on an excavator. If the model marking also includes an E, the grapple has spikes instead of jaws. The digit after E indicates the number of spikes.

VAHVA original spare parts are sold by Koneosapalvelu Oy.

Contact information for spare parts sales:

Koneosapalvelu Kuopio

Saaristokatu 5
tel. +358 20 755 1243

Koneosapalvelu Lappeenranta

Toikansuontie 7
tel. +358 20 755 1245

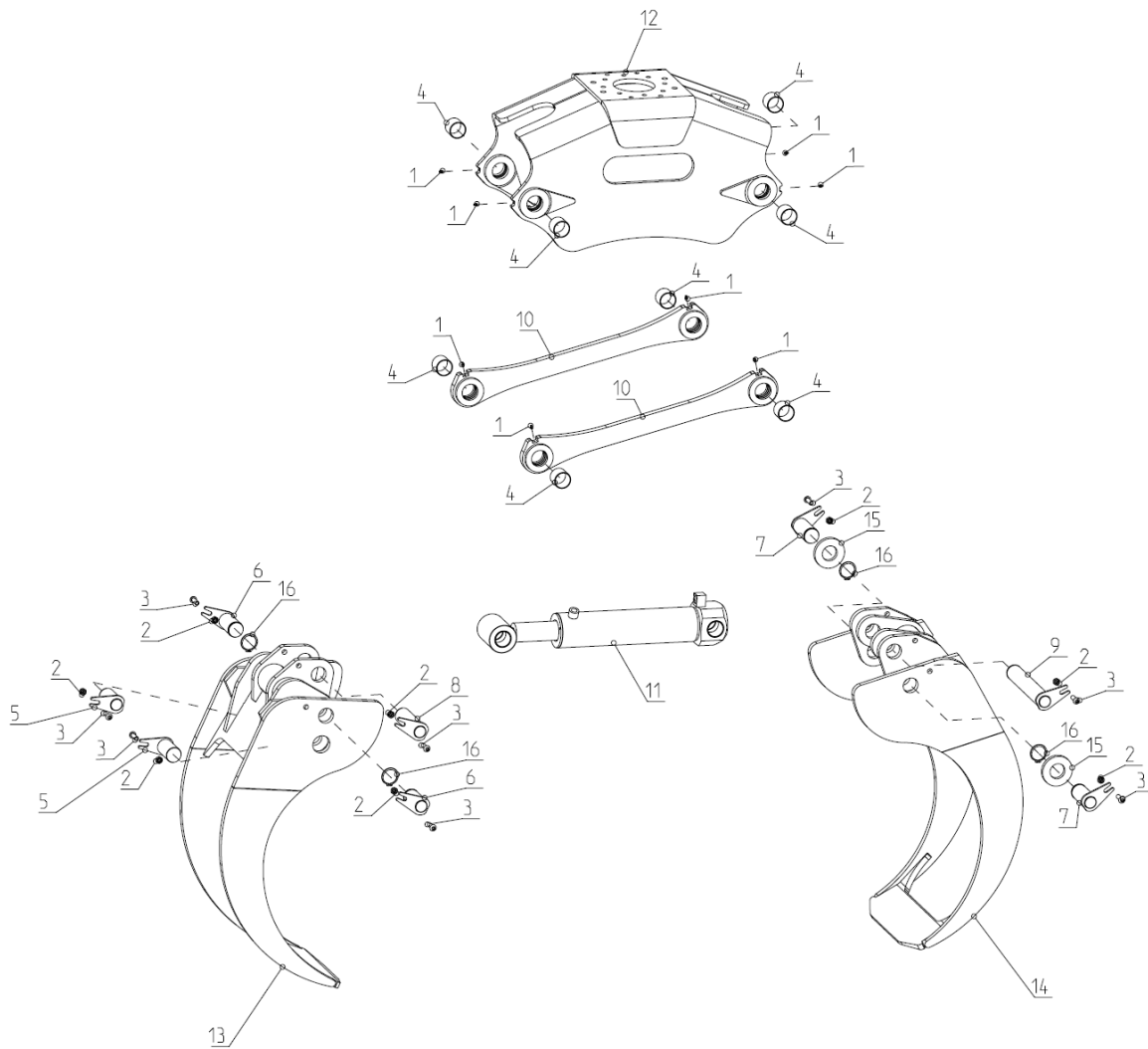
Koneosapalvelu Vilppula

Teollisuustie 5
tel. +358 20 755 1240

The pictures and drawings below are for reference only.

2 Spare parts drawing

2.1 Grapple



3 Spare parts lists

3.1 VAHVA GRAPLE C80

Part	Ordering code	Part No	Name	Pc	Unit
	A64221	V605000	VAHVA KAHMARI C80	1	pcs
	A65619	V605090	PIN GROUP C80/C100	1	pcs
1	A13827	TRM1167	GREASE NIPPLE M8x1 DIRECT	10	pcs
2	A13618	TZN1016	HEX LOCK NUT M16 DIN 985 8.8	8	pcs
3	A65404	TRE2166	SOCKET CAP SCREW M16*50 10.9 DIN 7380	8	pcs
4	A19768	TLY6571	BEARING 65/70x60 WB-802	12	pcs
5	A65607	V605080	PIN D65*131	2	pcs
6	A93408	V605082	PIN D65*140	2	pcs
7	A93409	V605084	PIN D65*156	2	pcs
8	A65609	V605078	PIN D65*231	1	pcs
9	A65610	V605076	PIN D65*407	1	pcs
10	A65611	V605050	PUSHROD C80/C100	2	pcs
11	A64226	V605001	HYDRAULIC CYLINDER 125/80*480, C80/C100	1	pcs
12	A65612	V605010	FRAME C80/C100	1	pcs
13	A65613	V605030	INNER GRAPLE C80	1	pcs
14	A65615	V605020	OUTER GRAPLE C80	1	pcs
15	A65616	V605029	FLANGE, D130/65,5 x 16	2	pcs
16	A91050	TKD0065	RETAINING RING 65*4	4	pcs

3.2 VAHVA GRAPLE C100

Part	Ordering code	Part No	Name	Pc	Unit
	A65555	V606000	VAHVA GRAPLE C100	1	pcs
	A65619	V605090	PIN GROUP C80/C100	1	pcs
1	A13827	TRM1167	GREASE NIPPLE M8x1 DIRECT	10	pcs
2	A13618	TZN1016	HEX LOCK NUT M16 DIN 985 8.8	8	pcs
3	A65404	TRE2166	SOCKET CAP SCREW M16*50 10.9 DIN 7380	8	pcs
4	A19768	TLY6571	BEARING 65/70x60 WB-802	12	pcs
5	A65607	V605080	PIN D65*131	2	pcs
6	A93408	V605082	PIN D65*140	2	pcs
7	A93409	V605084	PIN D65*156	2	pcs
8	A65609	V605078	PIN D65*231	1	pcs
9	A65610	V605076	PIN D65*407	1	pcs
10	A65611	V605050	PUSHROD C80/C100	2	pcs
11	A64226	V605001	HYDRAULIC CYLINDER 125/80*480, C80/C100	1	pcs
12	A65612	V605010	FRAME C80/C100	1	pcs

13	A65606	V606030	INNER GRAPLE C100	1	pcs
14	A65603	V606020	OUTER GRAPLE C100	1	pcs
15	A65616	V605029	FLANGE, D130/65,5 x 16	2	pcs
16	A91050	TKD0065	RETAINING RING 65*4	4	pcs

3.3 VAHVA GRAPLE C140

Part	Ordering code	Part No	Name	Pc	Unit
	A72994	V608000	VAHVA GRAPLE C140	1	pcs
	A65619	V605090	PIN GROUP C80/C100	1	pcs
1	A13827	TRM1167	GREASE NIPPLE M8x1 DIRECT	10	pcs
2	A13618	TZN1016	HEX LOCK NUT M16 DIN 985 8.8	8	pcs
3	A65404	TRE2166	SOCKET CAP SCREW M16*50 10.9 DIN 7380	8	pcs
4	A19768	TLY6571	BEARING 65/70x60 WB-802	12	pcs
5	A65607	V605080	PIN D65*131	2	pcs
6	A93408	V605082	PIN D65*140	2	pcs
7	A93409	V605084	PIN D65*156	2	pcs
8	A65609	V605078	PIN D65*231	1	pcs
9	A65610	V605076	PIN D65*407	1	pcs
10	A65611	V605050	PUSHROD C80/C100	2	pcs
11	A90682	V605002	HYDRAULIC CYLINDER 140/80*480, C140	1	pcs
12	A65612	V605010	FRAME C80/C100	1	pcs
13	A93422	V608030	INNER GRAPLE C140	1	pcs
14	A93421	V608020	OUTER GRAPLE C140	1	pcs
15	A65616	V605029	FLANGE, D130/65,5 x 16	2	pcs
16	A91050	TKD0065	RETAINING RING 65*4	4	pcs

In addition, all models include:

	A65523	V600310	STICKER, VAHVA	2	pcs
	A60243	V600325	STICKER the danger of compression	1	pcs
	A60242	V600324	STICKER the danger of oil spraying	1	pcs

Other parts (accessories / repair kits):

	A64216		SEAL KIT VAHVA-C80	1	pcs
	A90688		SEAL KIT VAHVA-C140	1	pcs

* in addition, the cylinder contains 4 pcs of bearing fittings
/ The ferrule enters that pin

4 Hydraulic cylinder repair

4.1 Hydraulic cylinder removal and installation

1. Place the grapple in closed position, lower the loader on a level surface. Make sure the loader stays in place.
2. Disconnect the hydraulic hoses and plug the connections.
3. Remove the pivot pins locking bolts.
4. Knock out the pivot pins. Use a mass hammer and a suitable knockout mandrel.
5. Configuration in reverse order. Make sure that the cylinder goes in the right direction.

4.2 Hydraulic cylinder seals replacement

1. Drain the oil from the cylinder.
2. Squeeze the cylinder firmly at its lower end into an upright position and open the muzzle using a cylinder tool.
3. Lift off the piston rod.
4. Remove the piston using a special tool. The piston is glued with a screw lock. You may have to heat it to open.
5. Check the order of the seals before disassembling and make sure you have the correct gasket set. Remove old seals.
6. Install the new seals in the correct orientation and order, lubricate them when installing.
7. Assemble the cylinder in reverse order.

