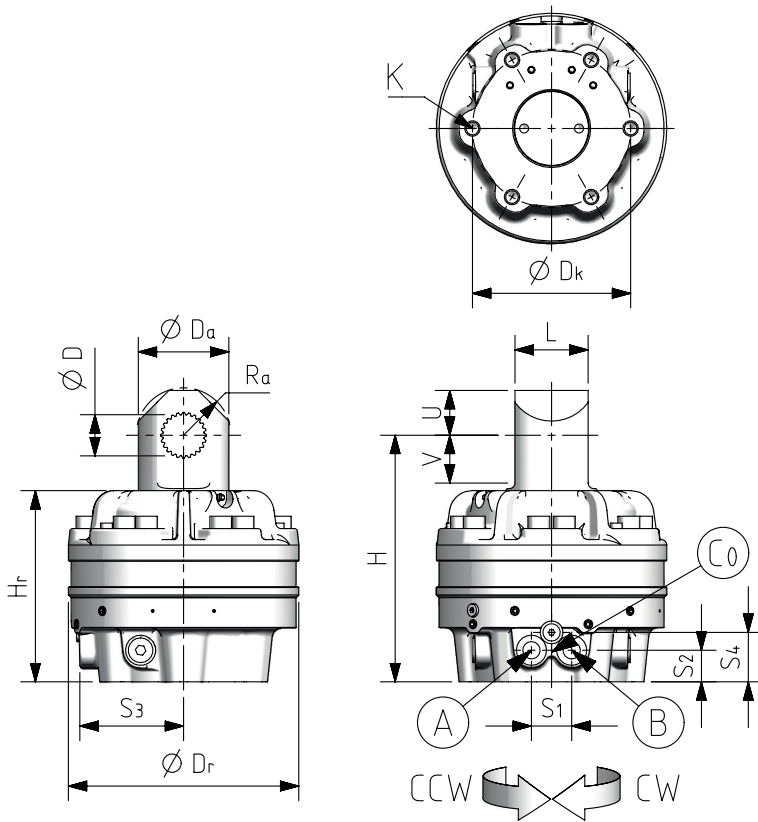


DIMENSIONS



Connections		P_{max}
A	G1/2" rotate CCW	25 MPa
B	G1/2" rotate CW	25 MPa
Co	G1/4" case drain	

Main dimensions

H	270
Dr	252
Hr	209 rotating part

S1	44	S2	34,5	S3	112
S4	54				

Tool interface dimensions

Dk	173
K	M16 depth 62 (6 x 60°) with $\varnothing 17$ depth 30 clearance

Link interface dimensions

D	A50x45 DIN5482, through				
L	80 0 / -0,15	Da	99		
U	49	Ra	52	V	52

TECHNICAL DETAILS

Performance

Axial load capacity	static	F_{sta}	150 kN
	dynamic	F_{dyn}	75 kN
	compressive	F_{com}	65 kN
Torque per 1 MPa		T	120 Nm
	max. torque [25 MPa]	T_{max}	3000 Nm
Max. rotation speed		n_{max}	30 rpm
Total weight		m	57 kg

Link swing damping

none

Paint

black primary coat

Hydraulics

Recommended oilflow	Q_{rec}	20 l/min
rotation restrictors included		
Displacement per rotation	V	788 cm ³
cross-over relief valves incl.	p_{lim}	26 MPa

